



GECI

GREEN ENERGY CONCEPTS, INC

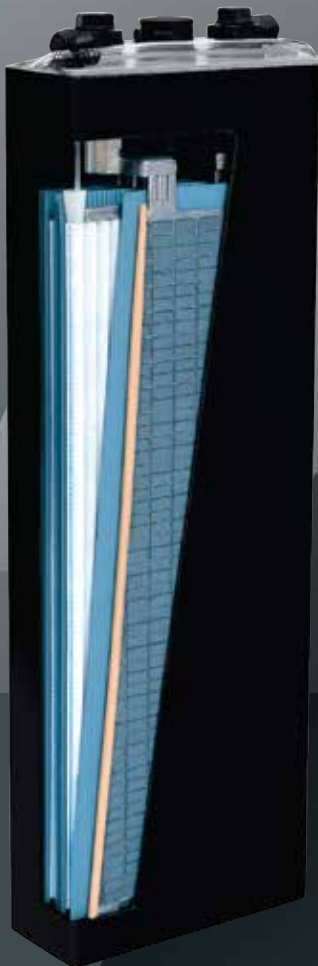
TUBULAR



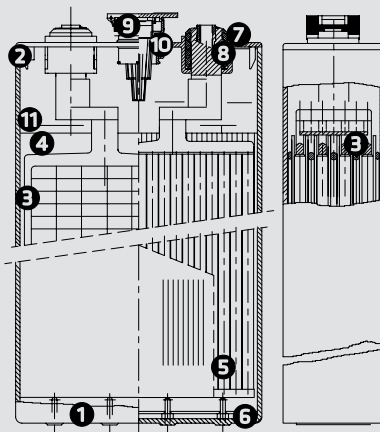
TECHNOLOGY

GECI TUBULAR batteries are the perfect mix of European technology with North-American standards, combining the higher capacity and efficiency of tubular cells in the same size casing and robust design of a flat-plate battery.

Why settle for less when you can have the best of both worlds?



DETAILED VIEW



- 1- Polypropylene Casing
- 2- Polypropylene Cover
- 3- Negative Grid Plate
- 4- Microporus Separator
- 5- Positive Armored Tube Plate
- 6- Settling Rib
- 7- Terminal Post
- 8- Rubber Seal
- 9- Cell Plug f35,5
- 10- Plug Seal f35,5
- 11- Electrolyte

FEATURES

- Tubular technology in BCI cells
- Higher capacity
- Minimum water consumption
- Superior durability
- High resistance to vibrations
- Quicker charging time
- Better heat resistance
- Easy maintenance
- Bolted posts available

Also available in DIN, BS sizes.



GECI

GREEN ENERGY CONCEPTS, INC

TUBULAR

GREEN ENERGY CONCEPTS, INC.

www.geciproducts.net